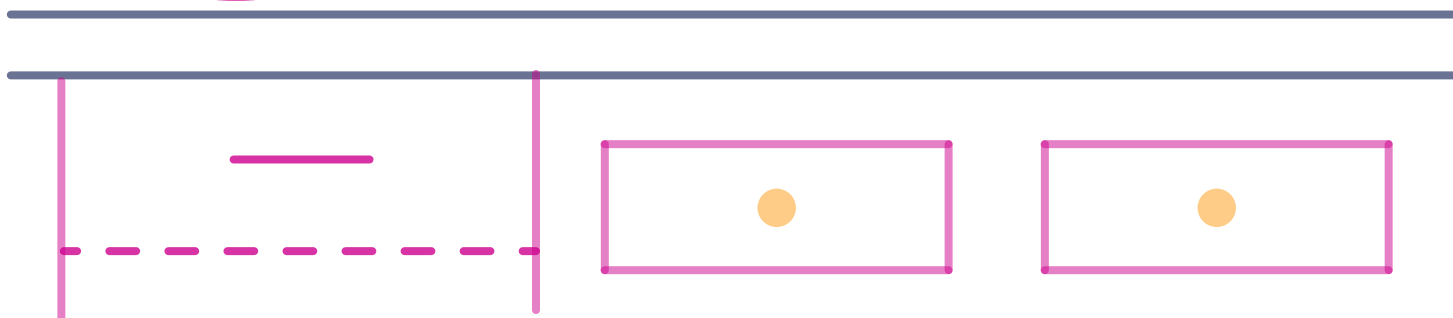
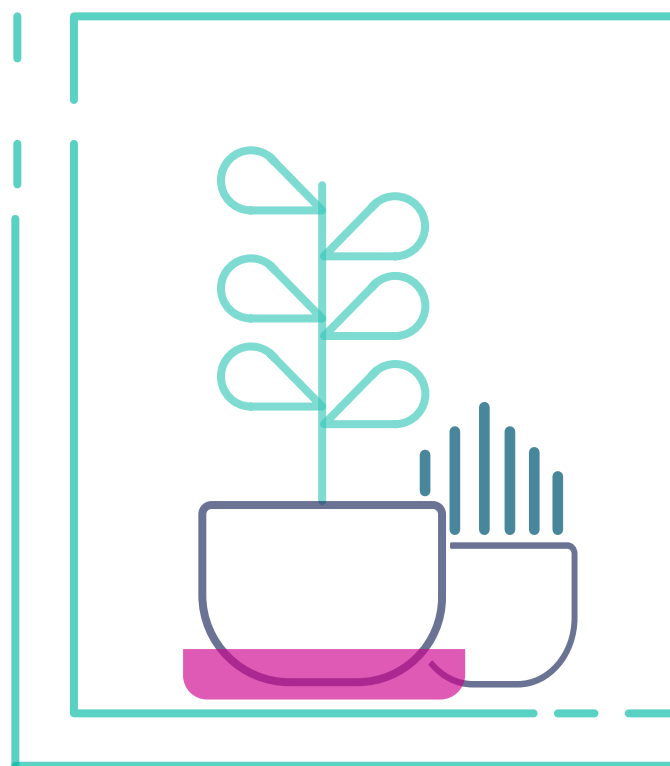
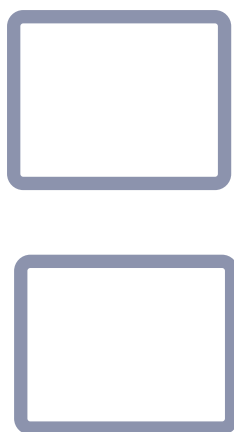


# Cultivating a Community of Care



# Agency Information

---

Agency Name

**Cascade AIDS Project, Inc**

Our Brands

**CAP, Our House, Prism Health**

Tax ID

**93-0903383**

Primary Address

**520 NW Davis St, Suite 215  
Portland, OR 97209**

# Leadership

---

Interim Chief Executive Officer

**Emily Gilliland**

Chief Development Officer

**Jessy Baros Friedt**

Chief Programs Officer

**Kristi Addis**

# Program Highlights

---

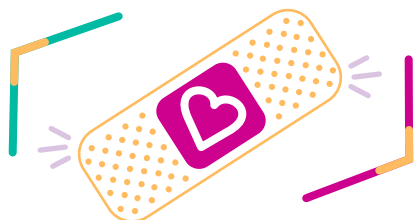
## Housing & Support Services

In 2021-2022, CAP provided long-term housing assistance to 392 people living with HIV/AIDS, and short-term housing assistance to 471 people living with HIV & AIDS. Additionally, 183 people received peer support services and 87 received employment services.

# 392



# 1,039



## Prevention & Testing

In 2021-22, CAP conducted 1,039 HIV tests. 490 people received PrEP/PEP navigation and 292 received insurance navigation. Lastly, our Prevention team participated in 214 off-site education/outreach events, with a wide range of community partners.

## Southwest Washington

In SW Washington, CAP provided medical case management to 428 people living with HIV/AIDS, 122 of whom received housing support. Additionally, we conducted 316 HIV tests and 94 clients received PrEP navigation.

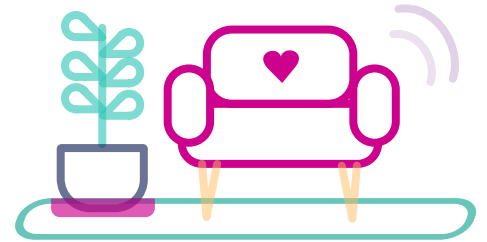
# 428



# Our House Residential Care Facility (RCF)

Our House RCF provides 24-hour specialized nursing care and for up to 14 people with advanced HIV & AIDS who require intensive care, many of whom also suffer from mental illness, substance abuse and/or histories of homelessness. Our work in 2021-22 centered around addressing complex co-morbidities, as well as difficult behavioral and cognitive issues.

# 392



# 48

## Neighborhood Housing & Care Program (NHCP)



NHCP encourages independent living in a safe, stable and healthy environment. In 2021-22, NHCP provided housing and in-home supportive services, including nursing, for 48 people living with HIV & AIDS.

## Esther's Pantry

In 2021-22, Esther's Pantry provided 725,614 pounds of food to 1680 households with a total of 5,040 people in those households, and the average amount of food taken home by a single household visiting Esther's Pantry increased to 400-600 pounds per visit. Additionally, 97% of our new clients served since July 2021 are collecting food to provide for their families with children or dependent parents.

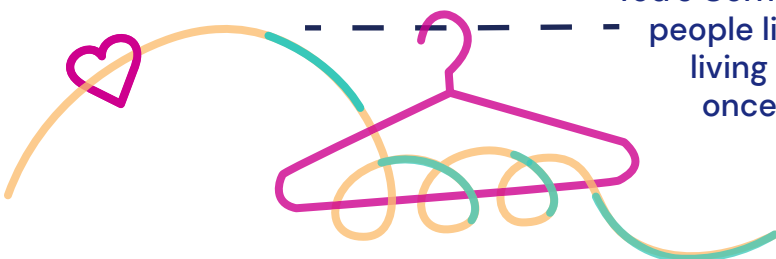
# 5,040



# 222

## Tod's Corner

Tod's Corner provides clothing and household items to people living with HIV & AIDS. In 2021-22, 222 people living with HIV & AIDS visited Tod's Corner at least once to access these essential support services.



# 1,371



## Prism Health

We provided LGBTQ+ specific primary care to 1371 patients and behavioral health care to 166 patients. In 2021-22, Prism Health secured major new funding which will expand our behavioral health care program and launch a medication assisted treatment program for LGBTQ+ people struggling with substance use disorder.

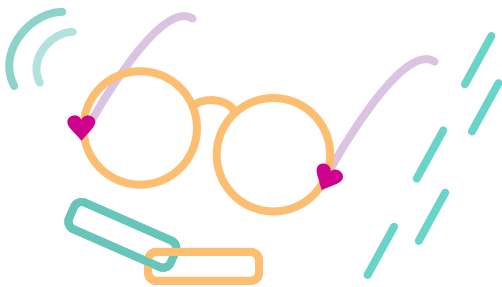
## Camp KC (Kids Connection!)

Camp KC is a fun and safe summer camp experience for children ages 5-15 who are living with and/or affected by HIV & AIDS. In August 2021, CAP provided a COVID-safe summer camp experience for 50 kids living with or impacted by HIV & AIDS. In August 2022, Camp KC returned to the Oregon coast for a week-long sleepaway experience!

# 50



# 180



## Aging Well

The Aging Well Program at CAP supports the well-being of older adults living with or affected by HIV. We host a wide variety of in-person and virtual activities, including weekly support groups, monthly group educational sessions, frequent social activities, and more. In 2021-22, Aging Well hosted more than 180 different activities and had more than 2,400 virtual or in-person contacts with long-term survivors of HIV.

Learn about these programs  
and more at [www.capnw.org](http://www.capnw.org)

# Cultivate A Community Of CareWith Us!

---

520 NW Davis St, Suite 215  
Portland, OR 97209  
503.223.5907

[www.capnw.org](http://www.capnw.org)