



HIV DISPARITIES IN WASHINGTON STATE



Office of Infectious Disease
September 2020

Land Acknowledgement

We are presenting today on the ancestral lands of the first people of the Squaxin, Cowlitz, Coast Salish, and Nisqually Tribes

We honor with gratitude the land itself and all of the Native people who call Washington home

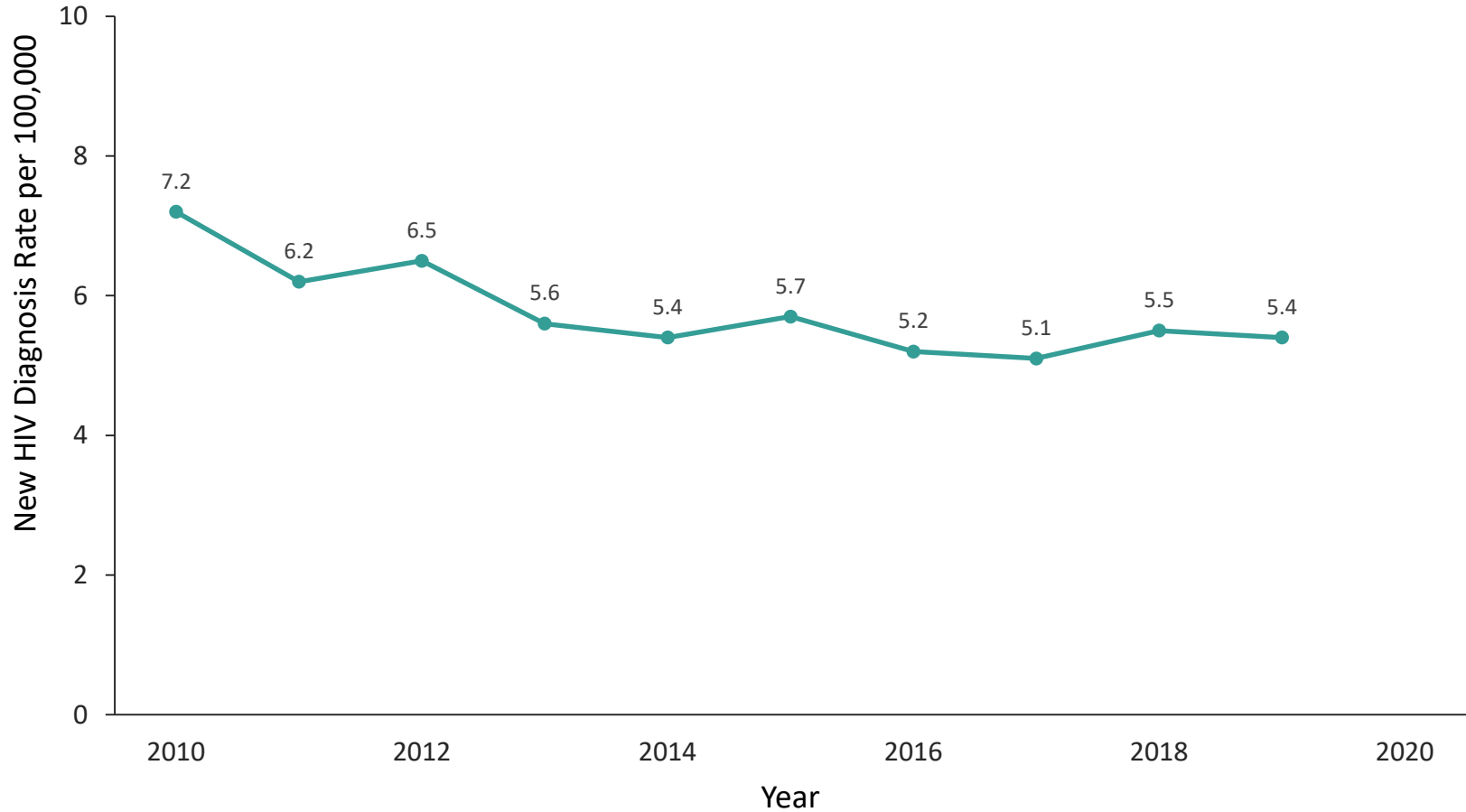
Definitions

- **Rate of new HIV diagnoses:** The number of new cases divided by the population of interest, in a one year period.
- **Linkage to care:** The proportion of new cases who have a CD4 or Viral Load Test within 30 days of diagnosis
- **Engagement in care:** The proportion of prevalent cases who have at least one CD4 or viral load test in a calendar year
- **Suppressed viral load:** The proportion of prevalent cases whose last reported viral load in a calendar year was ≤ 200 copies/ml

HIV in Washington State

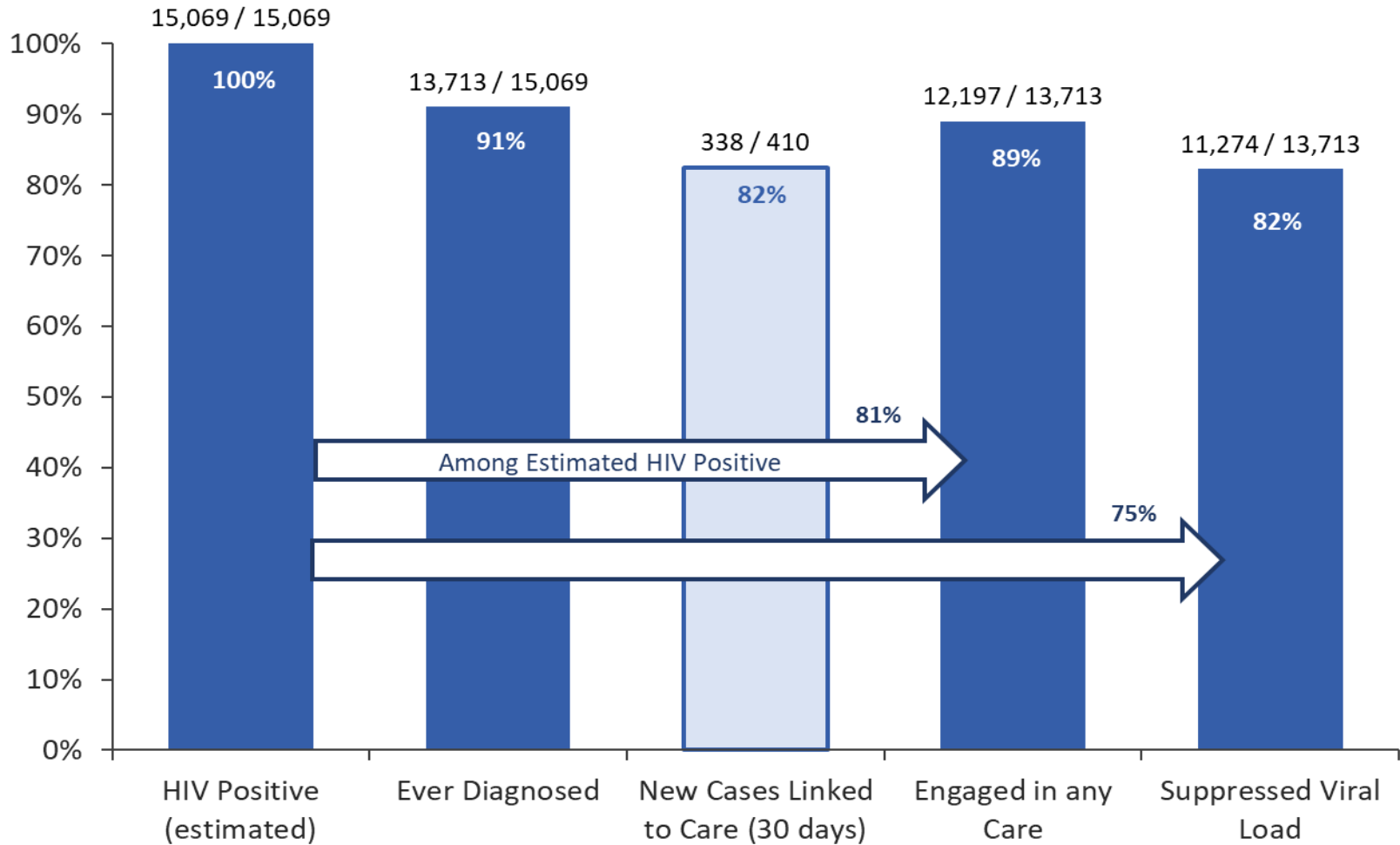
New HIV Diagnoses

HIV Diagnosis Rate, Washington State, 2010-2019



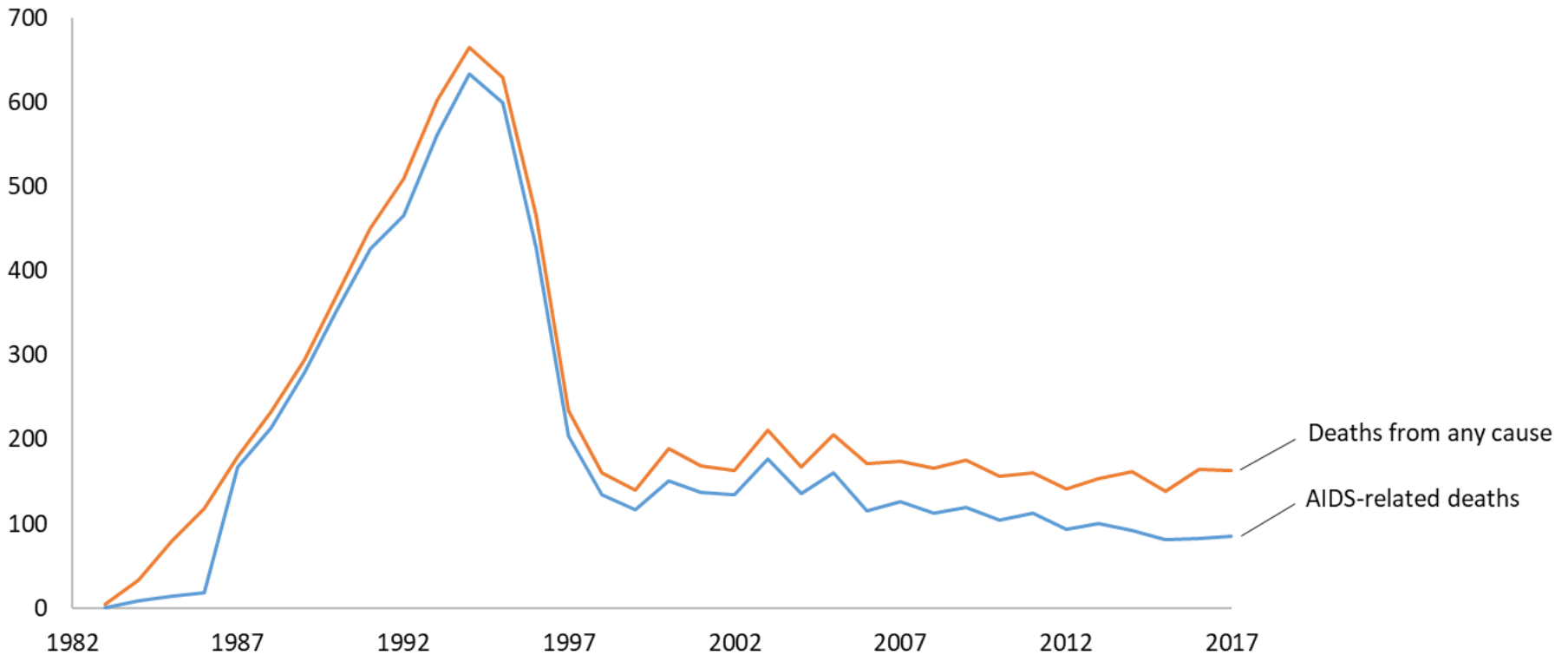
Washington State HIV Care Continuum, 2019

Based on HIV surveillance data reported through June 2020



Deaths

Deaths Among People Living With HIV in Washington State 1983-2017



Disparities

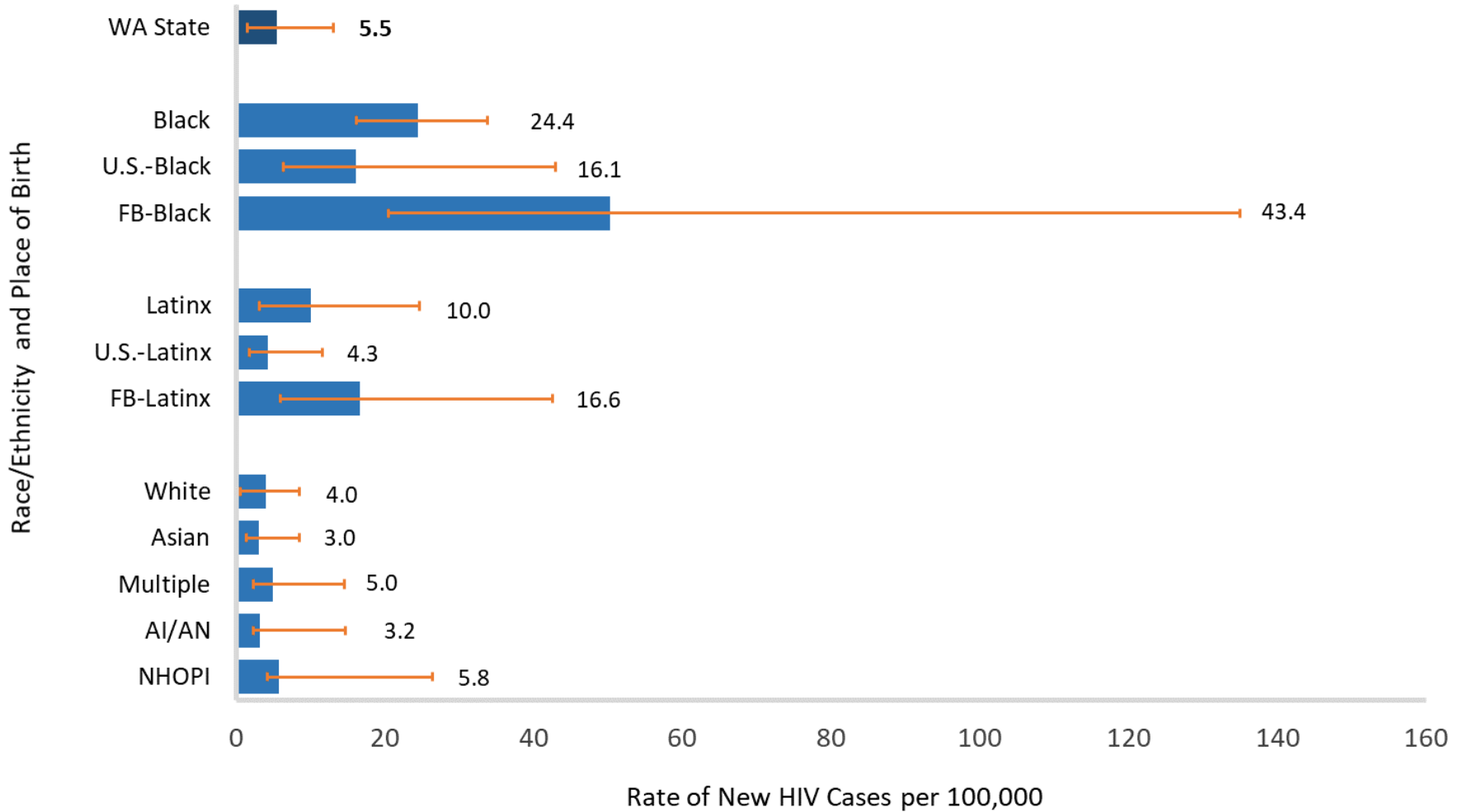


Racial health inequities exist and persist.

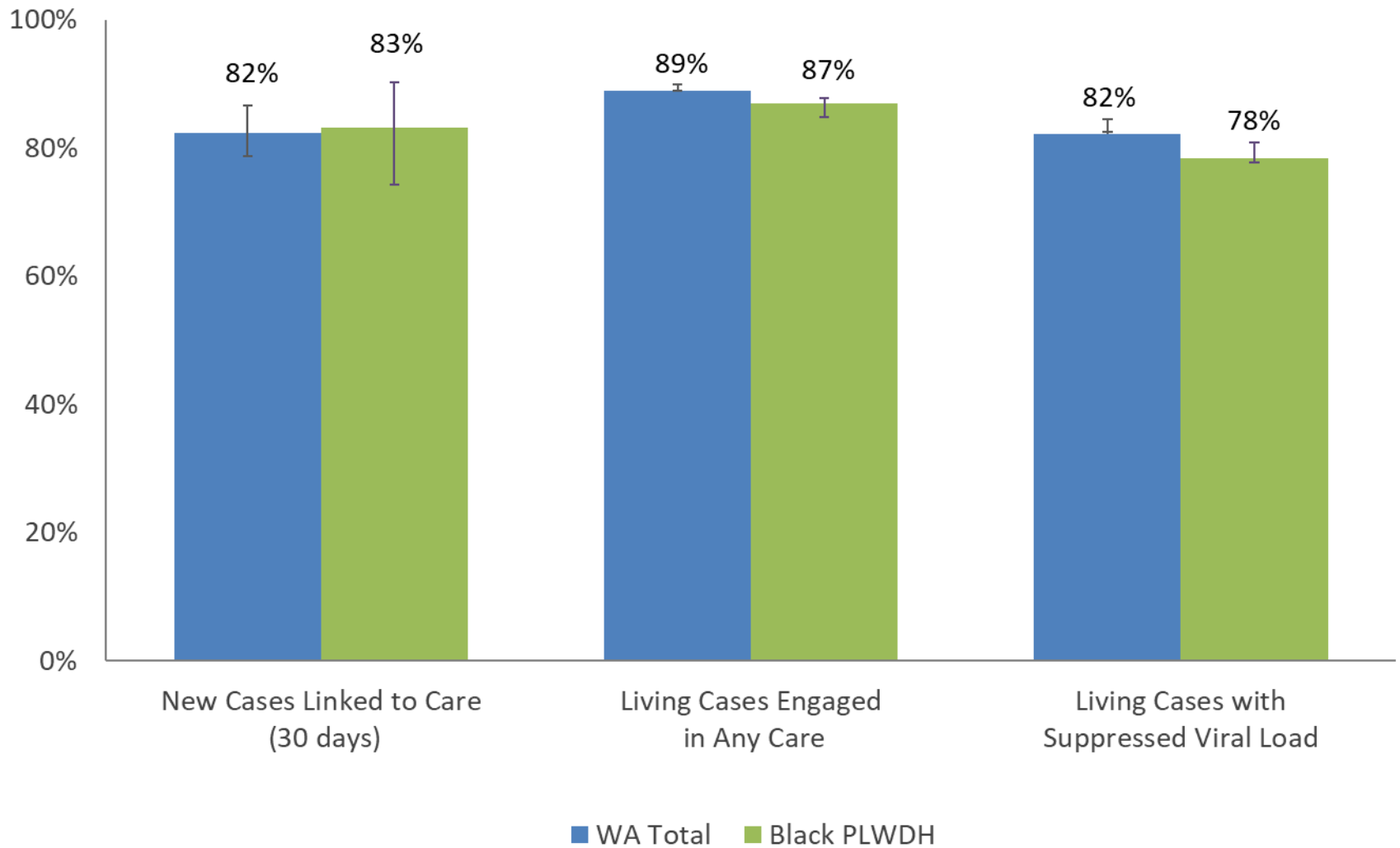
According to the Kaiser Family Foundation, racial health disparities are the “higher burden of illness, injury, disability, or mortality experienced by one (politically and socially constructed) population group relative to another.”^[1] We use *racial health disparities* synonymously with *racial health inequities*, although we acknowledge there are subtle differences and that *inequities* is preferred by some because it draws attention to the power imbalance at the root of the issue.

<https://www.instituteforhealingandjustice.org/section-1-racism-not-race-causes-health-disparities>

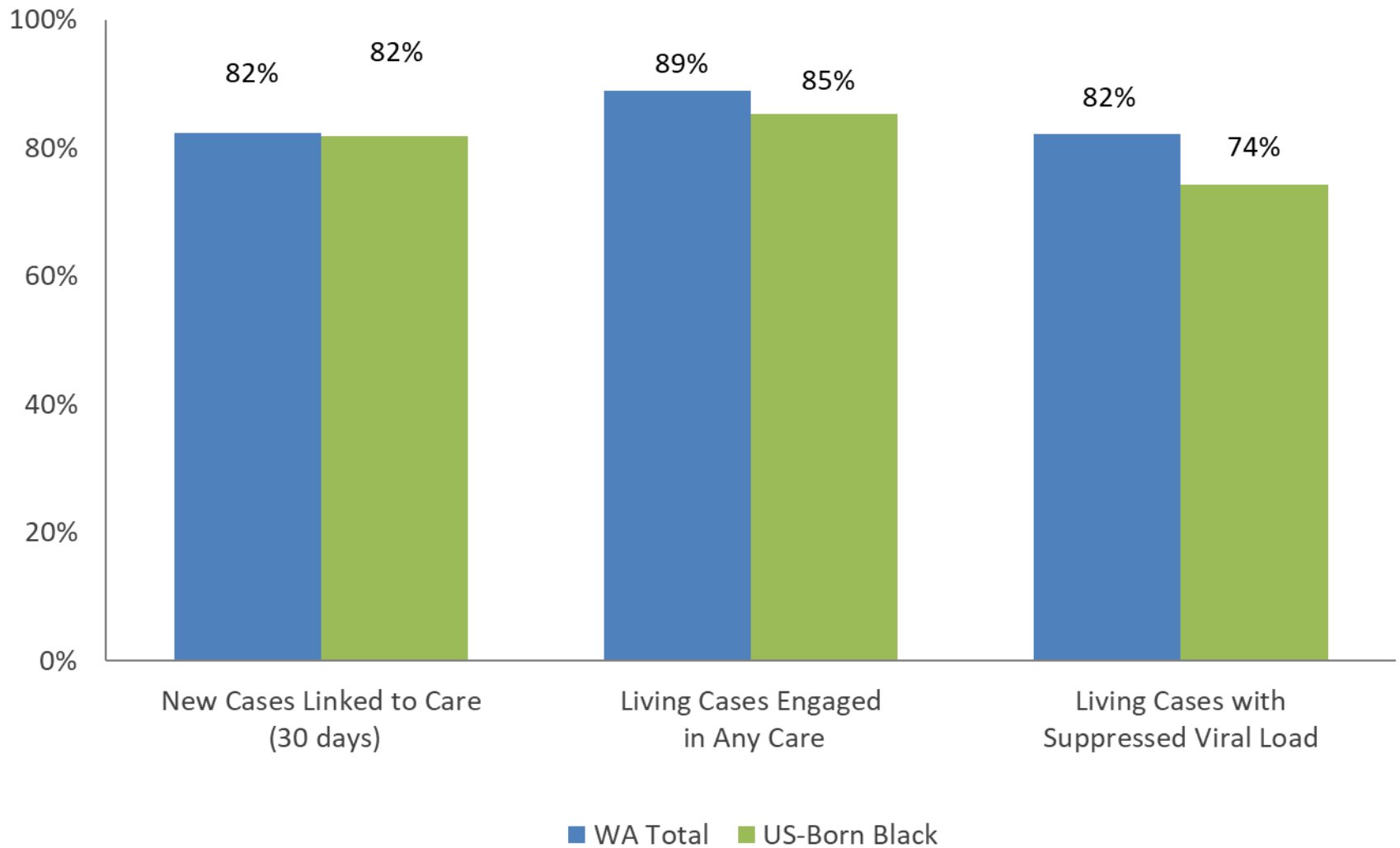
Rate of New HIV Diagnoses by Race/Ethnicity & Place of Birth, 2019



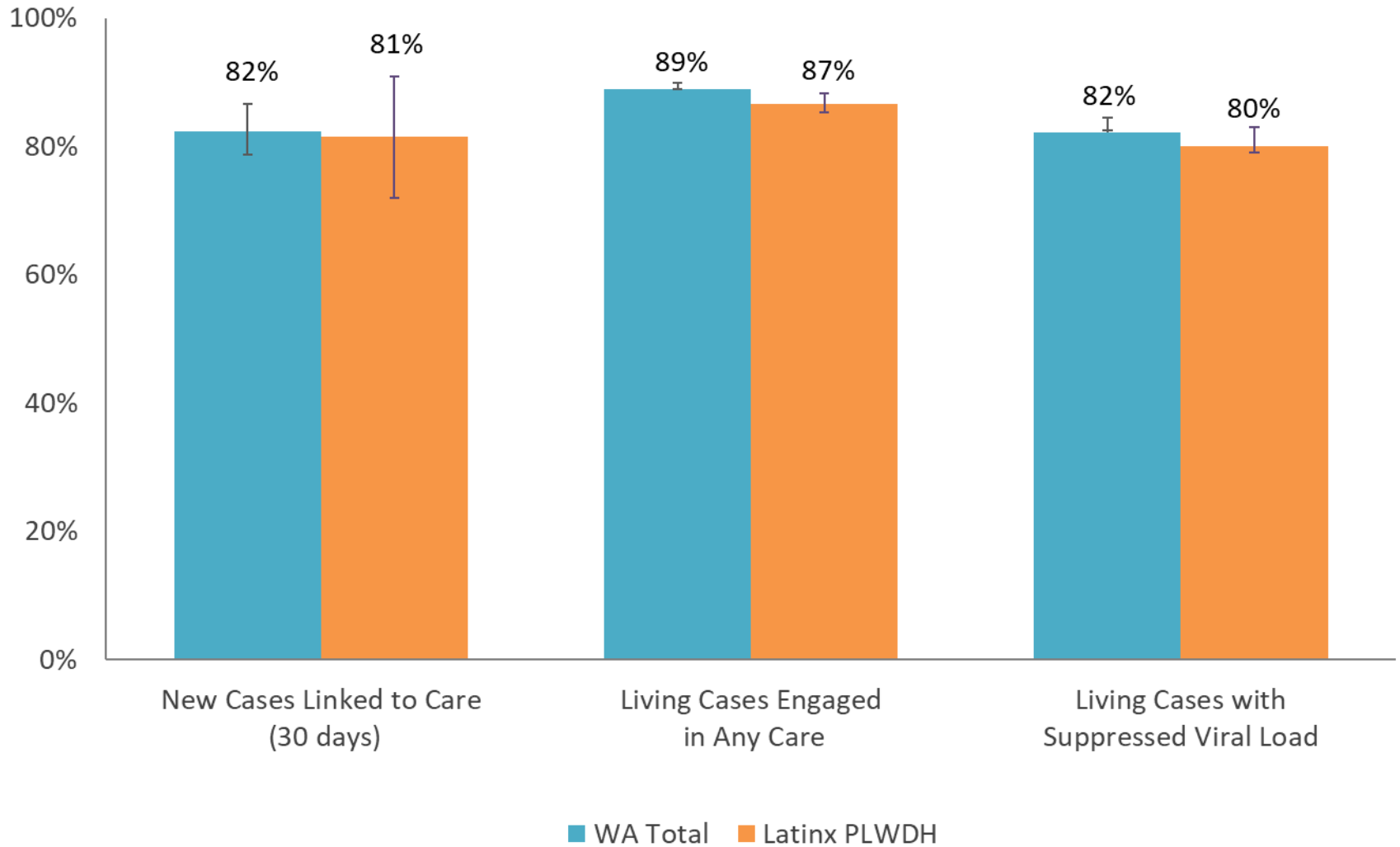
HIV Care Outcomes among Washington State Total and Black People Living with Diagnosed HIV, 2019



HIV Care Outcomes among Washington State Total and U.S.-Born Black People Living with Diagnosed HIV, 2019

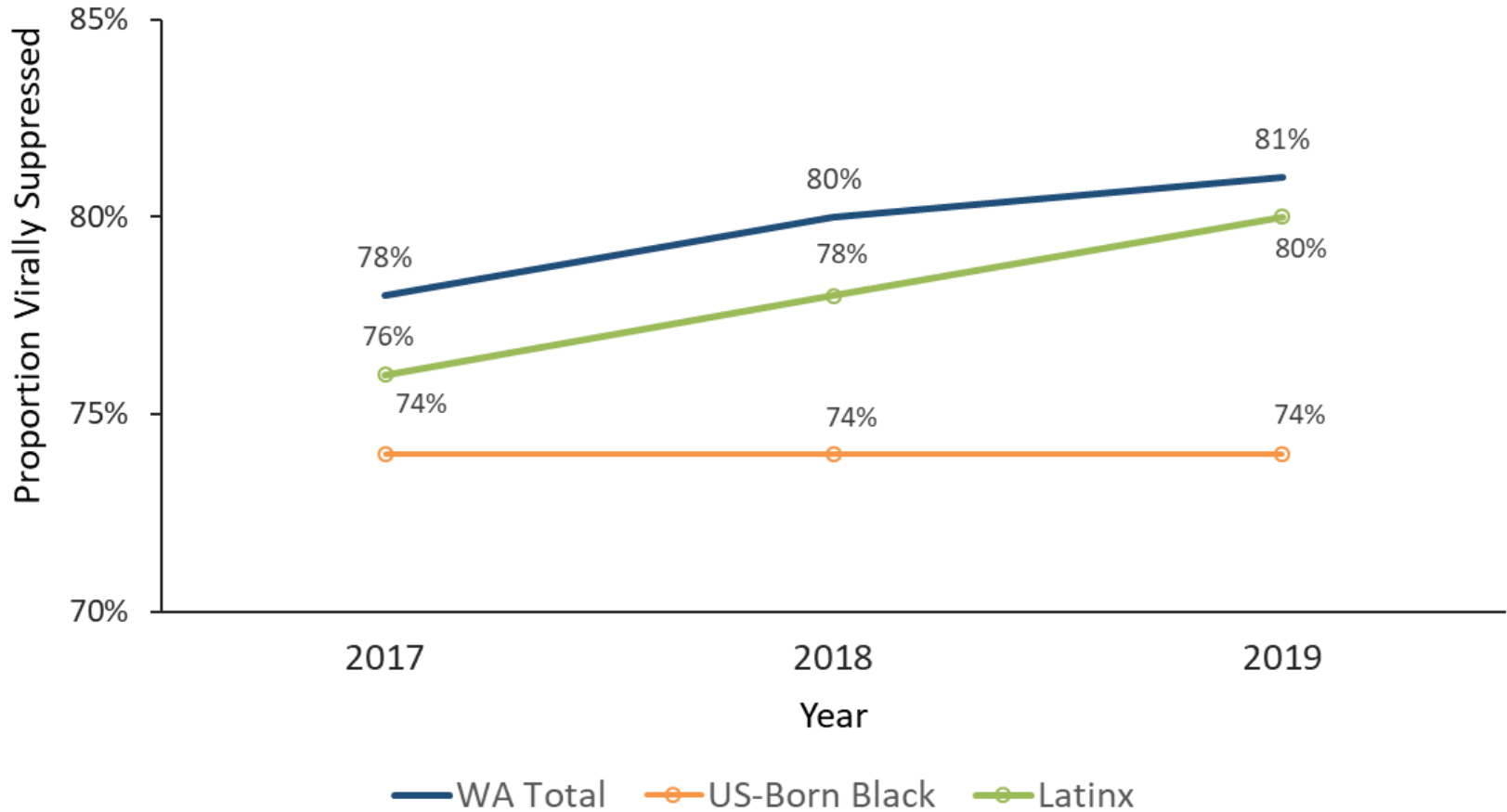


HIV Care Outcomes among Washington State Total and Latinx People Living with Diagnosed HIV, 2019



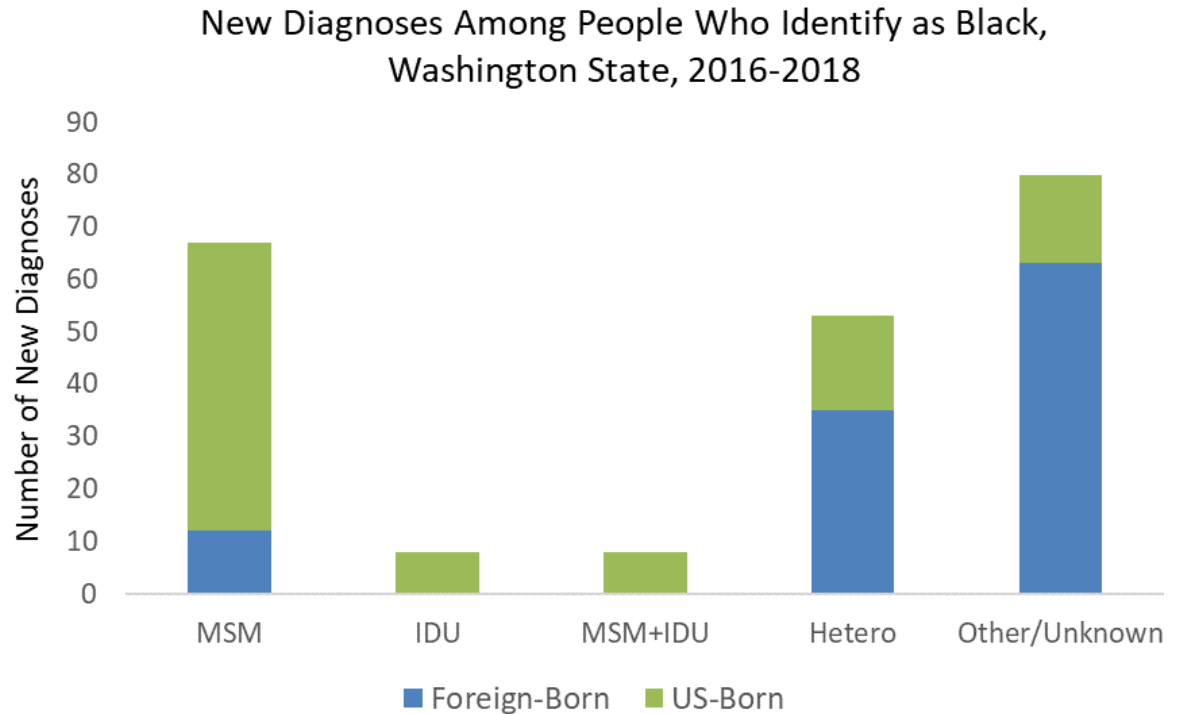
Closing the Gap?

Viral Suppression by Race/Ethnicity, WA State 2016-2019



Black PLWH: Two Separate Epidemics

- 80% of new diagnoses among **US-born blacks** identify as cisgender male
- 80% of new diagnoses among **foreign-born blacks** identify as cisgender female



-What are your experiences?

-What else distinguishes the experience of being a Black PLWH?

Service Utilization: Black Community

- **What services are important to this community?**
 - 77% of people said they use or need **Case Management Services**
 - 75% of people said they use or need **Dental Services**

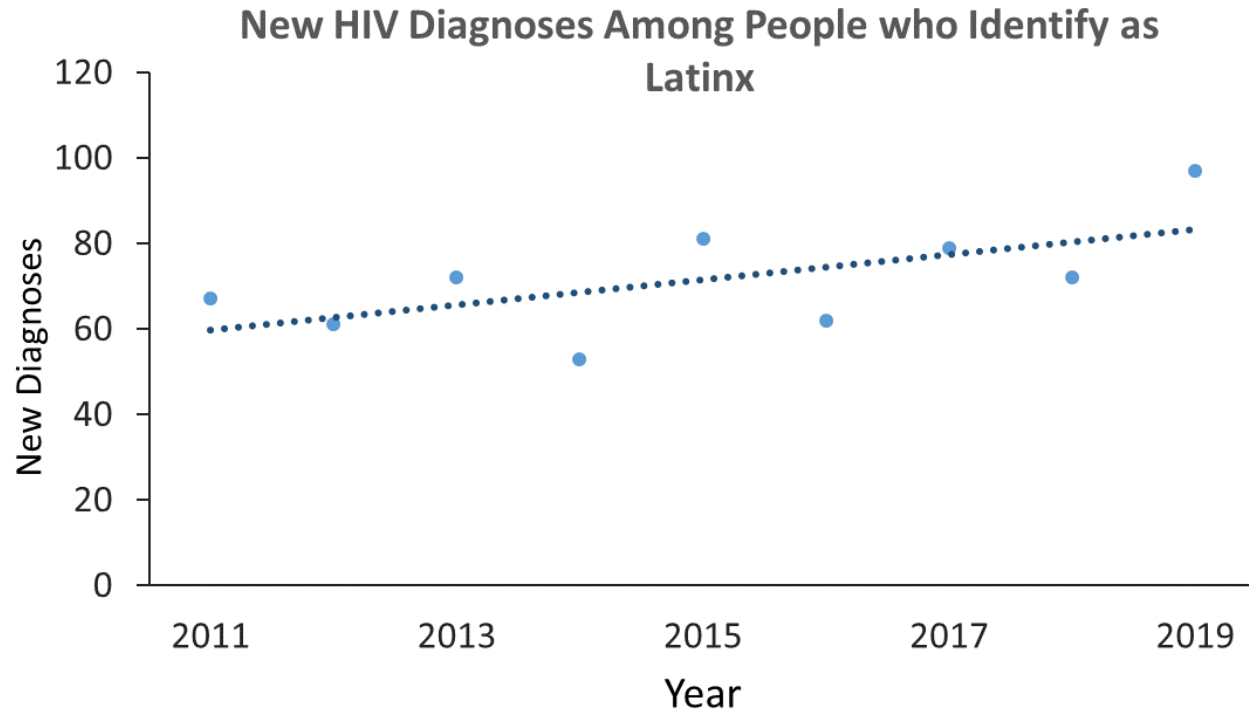
- **What services are needed?**
 - 24% of people said they have unmet need for **Dental Services**
 - 12% of people said they have unmet need for **Mental Health Services**
 - 11% of people said they have unmet need for **Meals and Food Services**

-Do these match the needs of the community that you observe?

-What other services are important to the black community?

Hispanic PLWH

- 77% of Hispanic cases identify as **MSM** (vs 59% of all new diagnoses)
- 27% of all Hispanic cases live in **Eastern WA** (vs 16% of all new diagnoses)



-What are your experiences?

-What else distinguishes the experience of being a Hispanic PLWH?

Service Utilization: Hispanic Community

- **What services are important to this community?**
 - 92% of people said they use or need **Dental Services**
 - 77% of people said they use or need **Case Management Services**
 - 66% of people said they use or need **ADAP**

- **What services are needed?**
 - 16% of people said they have unmet need for **Meals and Food Services**
 - 13% of people said they have unmet need for **Dental Services**
 - 11% of people said they have unmet need for **Peer Group Services**

-Do these match the needs of the community that you observe?

-What other services are important to the black community?



Black Lives Matter

