

2021
Annual Report



YCAP + OUR HOUSE + PRISM HEALTH



Board of Directors

EXECUTIVE COMMITTEE

Karol Collymore, PRESIDENT
NIKE

Bil Spigner, VICE PRESIDENT
NIKE

Edwin Kietzman, TREASURER
SMART FOODSERVICE WAREHOUSE STORES

Miguel Villareal, SECRETARY
KAISER PERMANENTE

Kris Young, MEMBER AT LARGE
NIKE

BOARD MEMBERS

Daniel Borgen
NEW SEASONS MARKET

Tracy A. Curtis
WELLS FARGO BANK

Eric Garcia
NEW RELIC, INC.

CJ Grubb
R1

Daniel Guilfoyle
NATIVE AMERICAN YOUTH & FAMILY CENTER

Jordan Olson
QUICKSTICK LLC

Rhodes Perry
RHODES PERRY CONSULTING, LLC

Kaydie Satein
PEACEHEALTH OF SW WASHINGTON

Natalia Williams
BAYSIDE COMMUNITIES

Jeff Woodcox
TONKIN TORP LLP

Executive Leadership

Tyler TerMeer, PhD
FORMER CHIEF EXECUTIVE OFFICER

Emily Gilliland
INTERIM CHIEF EXECUTIVE OFFICER

Peter Parisot
CHIEF IMPACT OFFICER + GENERAL COUNSEL

Kristi Addis
CHIEF PROGRAMS OFFICER

John Domingo
CHIEF FINANCIAL + OPERATIONS MANAGER

Jessy Baros Friedt
CHIEF DEVELOPMENT OFFICER

Ambassador Council

Travis Meuwissen, CHAIR

Ashley Mumm

Briana Burke

Christopher Giovarelli

Christopher Pham

David Morgenstern

Dan O'Neill

Daniel Christian

JP Allen

Jason Desilet

Josh Duffy

Kenty Truong

Konrad Jeungling



Mission

We promote well-being and advance equity by providing inclusive health and wellness services for LGBTQ+ people, people affected by HIV, and all those seeking compassionate care.



Board of Directors

Brian Wilson, CHAIR
COMMUNITY VOLUNTEER

Gwen Dayton, VICE CHAIR
OREGON HEALTH CARE ASSOCIATION

John Halseth, TREASURER
SOCIAL JUSTICE ADVOCATE

Robin Castro, SECRETARY
SOCIAL JUSTICE ADVOCATE

John Fritz
PacifiCorp

Julie Halter
Cascade Sotheby's International Realty

CJ Grub
R1

Joe Ichter
PROVIDENCE HEALTH & SERVICES

Clark McDonald
COMMUNITY MEMBER

Natalia Williams
BAYSIDE COMMUNICATIONS

Carol Warneke
PACIFIC WEST BANK

Brian Wyman
DENALI SOURCING SOLUTIONS

Executive Leadership

Mary Rita Hurley, RN MPH
EXECUTIVE DIRECTOR

Gwen Dunham
DIRECTOR OF NURSING SERVICES

Dana Kinney
DIRECTOR OF DEVELOPMENT & COMMUNICATIONS

Angie Holden
FINANCE MANAGER

Brent Blackwell
COMMUNITY SERVICES MANAGER
ESTHER'S PANTRY & TOD'S CORNER

Crystal Barber
NURSING SERVICES MANAGER

Aubrey Sonnenfeld
MANAGER OF SOCIAL SERVICES

Joseph Caver
MANAGER OF NEIGHBORHOOD HOUSING
& CARE PROGRAM (NHCP)

Daniel Watts
FOOD & NUTRITION MANAGER

Ambassador Council

Christopher Giovarelli

Christopher Pham

David Morgenstern

Eric Garcia

John Ogden

Ken Houseman

Kenty Truong

Tabitha Alajmi



Mission

Our House provides integrated health and housing services to people with HIV. Guided by compassion, collaboration, and respect, we provide 24-hour specialized care, supportive services, and independent housing with support services.

Dear Friends,

This year, as we approach the 2nd anniversary of COVID-19, we mark the 40th anniversary of the first five diagnosed cases of what later became known as HIV and AIDS in the U.S. For forty long years, HIV has reared its ugly head. For forty long years, we've fought, forged unbreakable ties, and cared for one another. And while the dueling pandemics of HIV and COVID-19 have continued to challenge us in ways we never could have imagined, we've continued to rise to the occasion in ways that we've demonstrated we could since the earliest days of the HIV/AIDS epidemic. There is no better proof of this resilience than the merging of Cascade AIDS Project (CAP) and Our House of Portland (Our House).

CAP and Our House have worked side-by-side and in collaboration since the 1980's, before there was any semblance of treatment for HIV. Throughout this time, we've had a shared vision for healthy, inclusive, and empowered communities. And now, like jigsaw pieces falling into place, we are coming together to provide the most robust and comprehensive services possible for people, of all ages and at all stages of life, who are living with HIV in our community. We are, quite simply, better together.

We are incredibly proud of how both organizations have weathered the challenges posed by COVID-19, each adapting accordingly to the unique needs of our clients, programs, and staff. In the case of Our House, Residential Care has worked around the clock through the entirety of the pandemic providing 24-hour care to people living with HIV who have difficulty managing independent living. In the case of CAP, each of four service locations has navigated a combination of virtual and in-person services aimed at serving our community while keeping each other safe. Prism Health's doors have remained open since day one, ensuring that patients can access critical care in person. It hasn't been easy, but our shared commitment to health equity has served as a beacon in the darkness.

Both CAP and Our House have long worked against the trimorbidities of HIV, homelessness, and mental health and/or substance use disorders. The last two years have brought an additional set of trimorbidities into focus: that of HIV, COVID-19, and racial injustice. There is no end to the grief for far too many lives lost—not just this year, but also over the last forty. At times it can feel like too much to bear—but then we hear a story about a client living with HIV who achieved sobriety and found a new job with benefits after 10 years out of work, despite the barrier of a criminal record; or we hear about a Prism Health patient who found gender-affirming mental health during a time of critical need. These are the things that keep us going. In our capacity for adaptation, collaboration, and growth—and in one another—we find abundance!

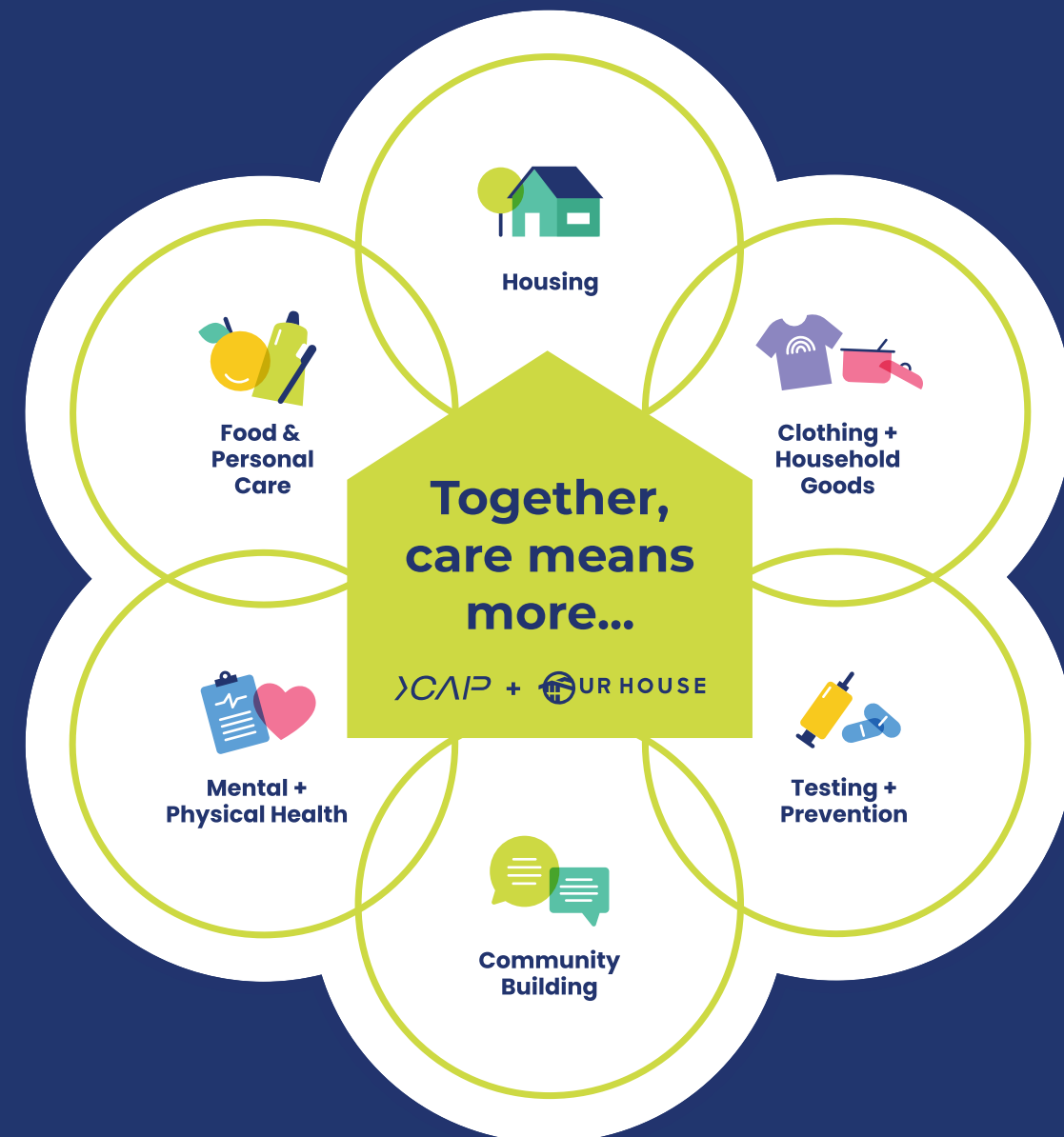
Sincerely,



Tyler TerMeer, PhD
CHIEF EXECUTIVE OFFICER, CAP



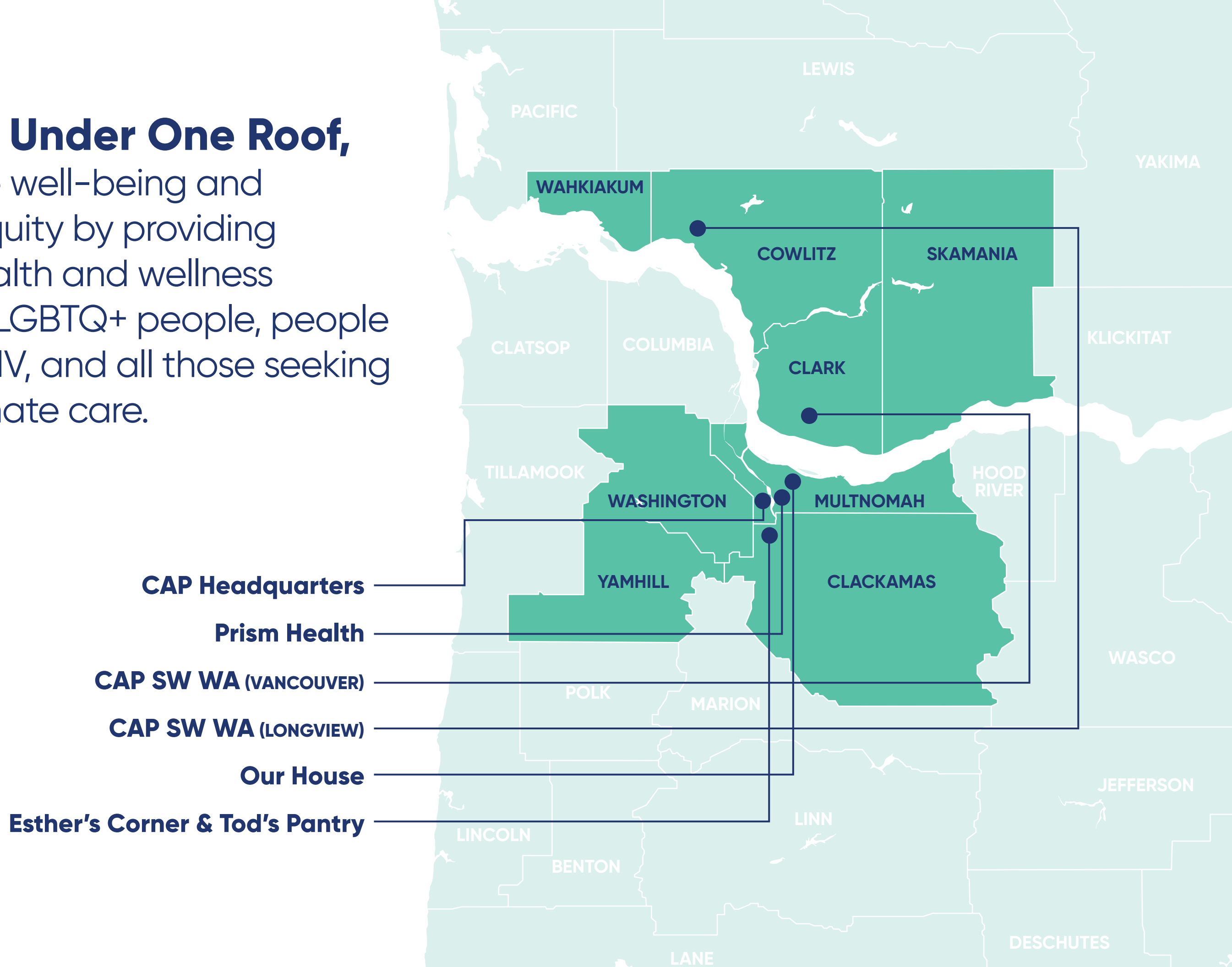
Mary Rita Hurley, MPA, RN
EXECUTIVE DIRECTOR, OUR HOUSE





Together, Under One Roof,

we promote well-being and advance equity by providing inclusive health and wellness services for LGBTQ+ people, people living with HIV, and all those seeking compassionate care.





HIV/STI Testing & Prevention

Through a broad, interconnected web of prevention and education services, we work to prevent the spread of HIV. With a major new award from the CDC, CAP's Prevention program continues to expand and shift its orientation towards the BIPOC communities that are most impacted by HIV. *This year, our agency provided HIV/STI tests to nearly 3,400 people. Of those tests, 80 were part of new targeted outreach efforts to outdoor encampments in the Portland metro area.*

In addition to testing, we promote healthy sex by distributing safer sex materials, such as condoms, and assisting people at risk of contracting HIV in accessing PrEP and PEP (pre- and post- exposure medications that prevent the spread of HIV). *This year, we provided PrEP navigation to 336 individuals.*



Linkage-to-Care, Medical Case Management & Benefits Navigation

In Oregon, we refer people who are newly diagnosed with HIV or who have fallen out of care to our CareLink team. CareLink provides clients with introductory information about their diagnosis and emotional support; guides them in accessing HIV treatment, medical case management, and insurance coverage; and, for clients with complex needs, offers intensive one-on-one support. In Southwest Washington, our team of medical case managers connects people living with HIV to treatment and a broad web of social supports, such as housing and employment services.

CAP's benefits navigation team provides application assistance, systems navigation, and advocacy to LGBTQ+ people and people living with HIV. *This year, our benefits navigation team assisted with the completion of 350 applications for medical insurance.*





Housing & Support Services

Believing that housing is HIV healthcare, our housing and support services help people who are living with HIV and experiencing homelessness to secure the stable housing they need to get healthy.

This year, we provided housing and support services to 1,110 people living with HIV. We provided long-term housing to 285 households and short-term housing to 368 households, in addition to emergency rent assistance that prevented 188 evictions or foreclosures; and we provided 10-15 people each week with motel vouchers for emergency shelter. Additionally, we distributed 119 cell phones, ensuring that clients could stay in contact with their housing case managers and peer support specialists through the challenges of the COVID-19 pandemic.

PEER SUPPORT & CULTURALLY SPECIFIC SERVICES NAVIGATION: We offer peer support for people struggling with their HIV diagnosis, acute mental illness, and/or substance-use disorder. *This year, we added a Peer Support Specialist role embedded at the HIV Day Center At present, about 165 people are connected with one of CAP's peer support specialists. We also provide culturally specific services navigation for Latinx/a/o and in partnership with Urban League of Portland for Black people living with HIV. This year, we provided 93 Black and/or Latinx/a/o households with culturally specific services navigation.*

OUR HOUSE NEIGHBORHOOD HOUSING AND CARE PROGRAM (NHCP) provides social work services, nursing, and therapeutic activities for people in their own homes, so that our clients can live independently as long as possible.

OUR HOUSE RESIDENTIAL CARE (RCF) is a team of expert clinicians who provide 24-hour services for up to 14 people with HIV who are having difficulty managing independent living. By tailoring nursing, social work and therapeutic everyday activities our clients and residents are able to define what 'living well' means to them.

ESTHER'S PANTRY connects individuals living with HIV and their families to essential items for a long, quality life. Esther's Pantry, Oregon's first LGBTQ+ affirming shopping style food pantry, provides food and personal care items, and has worked tirelessly throughout the COVID-19 pandemic to provide food deliveries to people living with HIV and experiencing food insecurity. *This year, in partnership with the Oregon Food Bank, the average amount of food taken home by a single household visiting Esther's Pantry increased to 400-600 pounds per visit.*



TOD'S CORNER runs in the same format and with the same client-centered philosophy as Esther's Pantry, which allows clients to select the household goods and clothing they need and can't otherwise afford. *This year, in a surge of community support in response to the pandemic, Tod's Corner saw a 175% increase in donations. Additionally, in fall of 2020, Tod's Corner contributed some 10,000 pounds of clothes to Oregon wildfire relief efforts.*



CAMP KC (KIDS CONNECTION!) is a fun and safe summer camp experience for children ages 5-15 who are living with and/or affected by HIV/AIDS. *This year, 65 kids participated in the COVID-safe Camp KC model called "Camp-in-a-Box," which maintains the vital social support provided by the Camp KC community during the pandemic, along with the essential items that Camp KC families rely on getting each year from the "Camp Kaboodle." We can't wait for Camp KC to head back to the Oregon Coast in 2022!*



AGING WELL seeks to support the well-being of aging adults living with or affected by HIV, in collaboration with others, by fostering hope and creating a sense of belonging among individuals who often feel alone and isolated. *This year, Aging Well hosted events four days a week—totaling about 200 gatherings—with a range of focuses from peer support to activism.*





Culturally Specific LGBTQ+ Healthcare

PRISM HEALTH is the premier nonprofit LGBTQ+ health center providing comprehensive primary and behavioral healthcare in the Pacific Northwest (Oregon, Washington, and Idaho). Since opening its doors in 2017, Prism Health has become a model for culturally-specific care and now serves over 1,750 patients. *This year, our behavioral health services continued to expand; we now have over 100 behavioral health patients. Additionally, in response to the COVID-19 pandemic, Prism Health administered 6,946 COVID-19 tests and 137 COVID-19 vaccines.*



Public Policy & Advocacy

Over the past year, CAP's public policy and advocacy efforts have expanded dramatically. In fact, PP&A was formalized as a full-fledged department in the organization! Among other victories, we proudly contributed to the passing of Oregon Ballot Measures 110, which will have a massive and long standing impact on the state's capacity to provide behavioral healthcare for those struggling with Substance Use Disorder.



Community Engagement

Each year, CAP and Our House host a wide variety of awareness-raising and community-building events. We are our community! *This year, over 1,000 people participated in the CAP Art Auction, 489 individuals or teams fundraised for CAP through AIDS Walk, and 300 people attended Our House's annual gala. CAP hosted six virtual "CAPPY Hour" events and Our House created "Drag Delivered," both of which fostered community through the isolation of the pandemic. Additionally, when it felt safe to do so, CAP hosted smaller in-person events in collaboration with various LGBTQ+ establishments around Portland, including Drag Bingo, organized by our Junior Board. Lastly, about 60 volunteers supported CAP's mission this year, 22 of whom participated in food deliveries in partnership with Esther's Pantry.*





A rich history of working towards a shared mission of providing compassionate care.

1981 First reports arise of a disease affecting gay men in San Francisco & New York. It is later given the name Gay Related Immune Deficiency (GRID). The first State of Oregon AIDS case was diagnosed in the same year.

1983 Human Immunodeficiency Virus (HIV) is identified

1983 CAP is founded as a grassroots response to the AIDS crisis and merges with CHESS (Community Health and Essential Support Services), an HIV-related organization providing one-on-one emotional support.

1985 Esther's Pantry (named in memory of Chester "Esther" Brinker, one of the first people in Portland to die of complications from AIDS) is created, distributing food and personal items to people living with AIDS.

1985 The first CAP art auction is held

1985 CAP sponsors its first pledge walk, "From All Walks of Life."

1986 CAP receives its' 501(c)(3) designation and becomes a strong voice in the community for HIV education, prevention, and service issues.

1987 AZT, the first drug to treat HIV is developed and licensed

1988 Our House opens (as Juniper House) to provide facility-based 24-hour nursing care to people in the advanced and end states of HIV and AIDS

1988 World AIDS Day was first observed

1988 Tri-Met removes CAP's display advertising from all of its buses in the face of public controversy, saying CAP was promoting gay lifestyles and behaviors.

1990 Our House moves to its current location.

1995 CAP begins providing housing services.

1996 A combination drug treatment known as the "AIDS cocktail" is introduced and patients are often able to delay the onset of AIDS

1998 African Americans account for 49% of AIDS deaths. Mortality for African Americans is almost ten times that of white people.

2003 October 15th marks the first annual National Latino AIDS Awareness Day.*

2004 Our House launches the Neighborhood Housing & Care Program (NHCP) to help those with HIV/AIDS live independently in the community.

2006 Construction is completed on the brand new Our House facility.

2007 Our House takes over operations of Esther's Pantry and Tod's Corner.

2008 September 18th is the first observance of National HIV/AIDS and Aging Awareness Day.*

2010 CAP receives funding to begin offering HIV testing and prevention services in Southwest Washington and announces a new program of rapid HIV testing for the general public.

2012 Recognizing how closely the two organizations work together, Our House leadership sits on the search committee for CAP's next executive director. CAP does the same for Our House in 2016 and 2017.

2013 Our House celebrates 25 years of providing vital services to people living with HIV

2015 The CDC announces that 90% of new HIV infections could be prevented by diagnosing people living with HIV and ensuring that they receive prompt, ongoing care and treatment.*

2017 CAP opens Prism Health and a new office in Vancouver, Washington

2018 Esther's Pantry is named Oregon's First LGBTQ+ Affirming Food Pantry, in partnership with the Oregon Food Bank; CAP opens its fourth service site in Longview, Washington, expanding our capacity to provide services in rural and underserved areas in Southwest Washington

2020 The COVID-19 pandemic descends, and in response, CAP and Our House partner to deliver hundreds of emergency food boxes to clients. The boards of both organizations sign a resolution to begin thoughtfully and intentionally exploring a merger. This is also the year that Prism Health becomes a Federally Qualified Health Center Look-Alike, which expands our capacity to provide care to all people regardless of their ability to pay.

2021 CAP and Our House formalize and announce plans to merge. Together, we reflect on 40 years of the HIV and AIDS epidemic and commit to a future together providing compassionate care for all those impacted.

2022 CAP + Our House + Prism Health are finally together, under one roof!

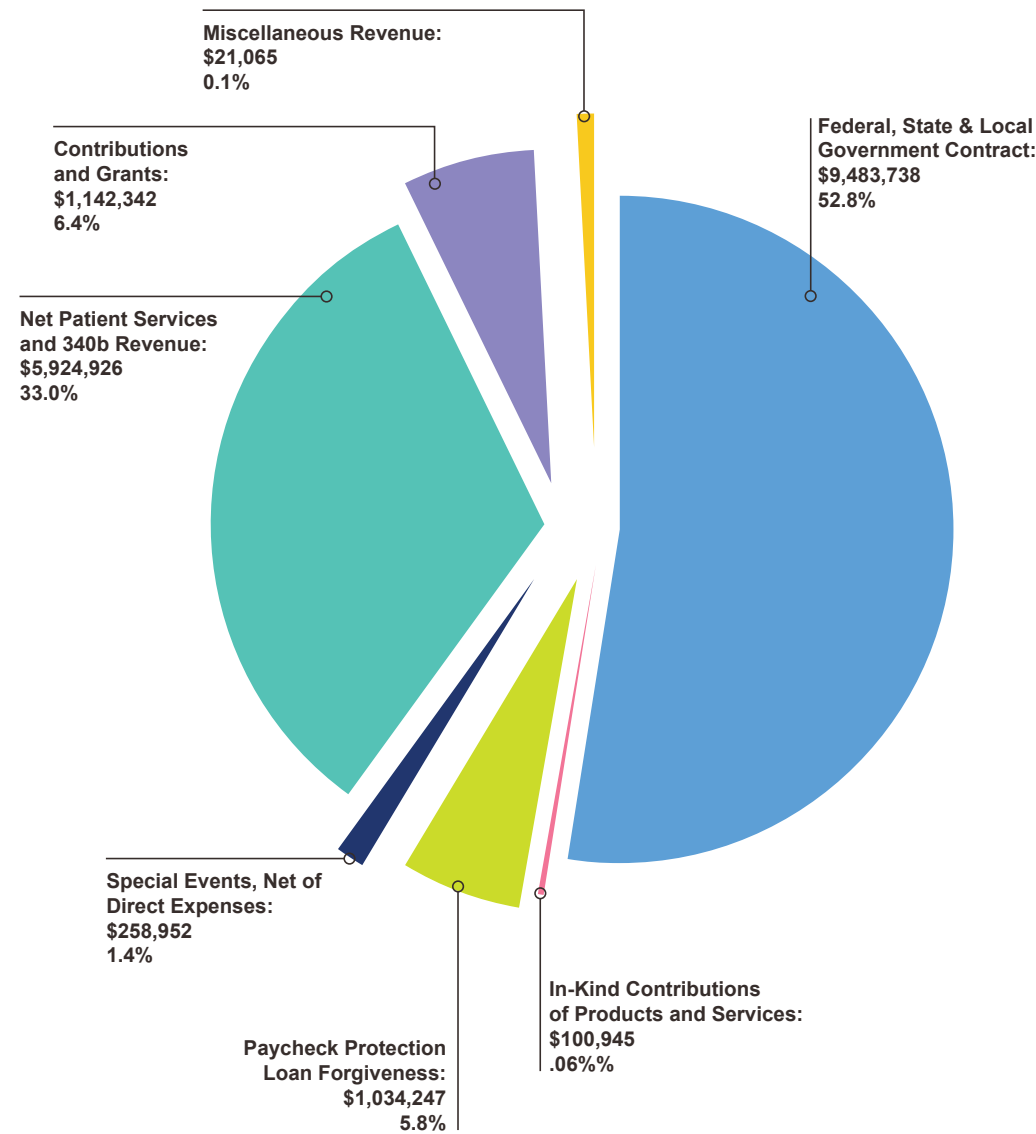


CAP 2021 Financial Data



FUNDING SOURCES

FOR PERIOD OF FY21



STATEMENT OF FINANCIAL POSITION

REVENUE

Total Revenue	
Federal, State & Local Government Contract	9,483,738
Miscellaneous Revenue	21,065
Paycheck Protection Program Loan Forgiveness	1,034,247
Special Events, Net of Direct Expenses	258,952
Net Patient Services and 340b Revenue	5,924,926
Contributions and Grants	1,142,342
In-Kind Contributions of Products and Services	100,945
Total Revenue	17,966,215

ASSETS

Property & Equipment	3,487,111
Government Contracts Payments Receivable	1,940,259
Cash and Cash Equivalents	2,696,402
Contributions & Private Grants Receivable	477,799
Patient Services and Pharmacy Receivables	722,820
Deposit & Prepaid Expenses	161,345
Donated inventory for Art Auction	-
Total Assets	9,485,736

EXPENSE

Housing & Support Services	5,851,263
Health Clinic Services	4,982,804
SW Washington Services	1,852,376
Prevention & Education Services	1,612,037
Advocacy & Public Policy	150,291
Management & General	1,412,719
Financial Development	639,573
Total Expenses	16,501,063

Increase in Net Assets: 1,465,152

FOR PERIOD OF FY21

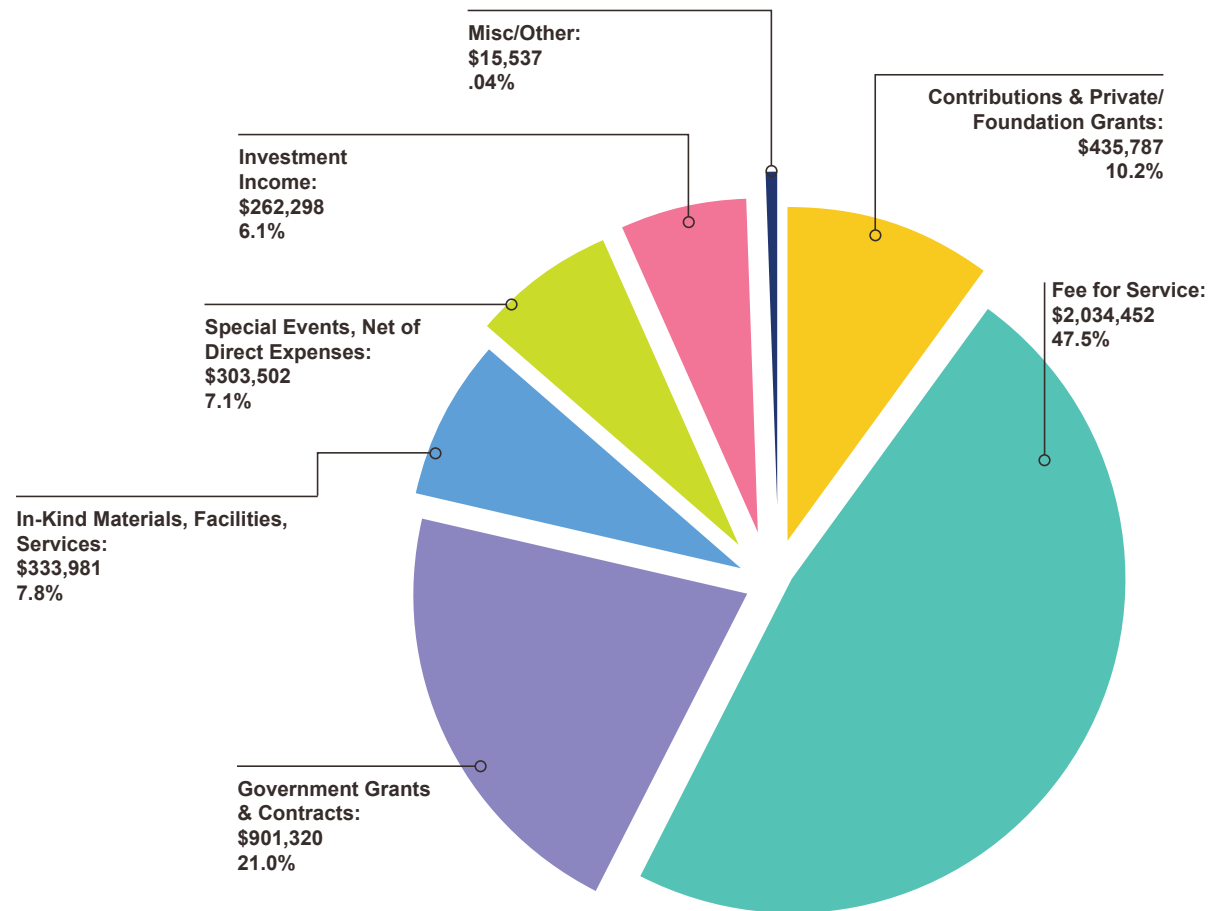


Our House of Portland 2021 Financial Data



FUNDING SOURCES

FOR PERIOD OF FY21



STATEMENT OF FINANCIAL POSITION

REVENUE

Total Revenue	
Contributions & Private/Foundation Grants	435,787
Fee for Service	2,034,452
Gov't gGrants & Contracts	901,320
In-Kind Materials, Facilities, Services	333,981
Special Events, Net of Direct Expenses	303,502
Investment Income	262,298
Misc/Other	15,537
Total Revenue	4,286,877

ASSETS

Cash and Cash Equivalents	386,655
Accounts and Contracts Receivable	348,357
Contributions Receivable	28,178
Prepaid Expenses and Deposits	47,500
Investments	1,849,342
Property and Equipment, Net	2,178,510
Total Assets	4,838,542

EXPENSE

Residential Care	1,832,525
Neighborhood Housing & Care	613,494
Community Svcs	591,994
Mgmt & Gen	254,123
Fundraising	319,613
Total Expense	3,611,749

Increase in Net Assets:

675,128

FOR PERIOD OF FY21



*Under
One
Roof*

YCAP

+



UR HOUSE

+

PRISM



HEALTH